

Scales

Below are a selection of rules, ideal for use in evidence photos. Measurements are in both inches and millimetres, and crosshair circles assist in photogrammetry corrections.

Magnetic scales

Available in black with white markings, or white with black markings. The rear surface is fully magnetic, and there is a blank area at the centre of each scale to write relevant information such as initials or case number. 150mm/6 inches in length.



Black

code: 06-0001

£1.00 + VAT



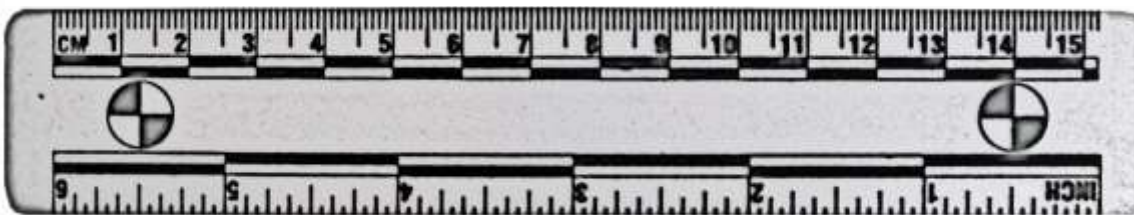
White

code: 06-0002

£1.00 + VAT

Plastic scales

Available in clear or white, both with black markings. There is a blank area at the centre of each scale to write relevant information such as initials or case number. 150mm/6 inches in length.



Clear

code: 06-0003

£1.00 + VAT



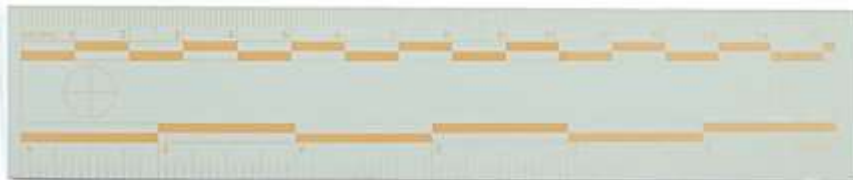
White

code: 06-0004

£1.00 + VAT

Plastic Fluorescent scales

Available in white with orange markings, straight (150mm) or angled (8mm x 8mm). There is a blank area at the centre of the straight scale to write relevant information such as initials or case number.



Straight

code: 06-0005

£1.00 + VAT



Angled

code: 06-0006

£1.50 + VAT

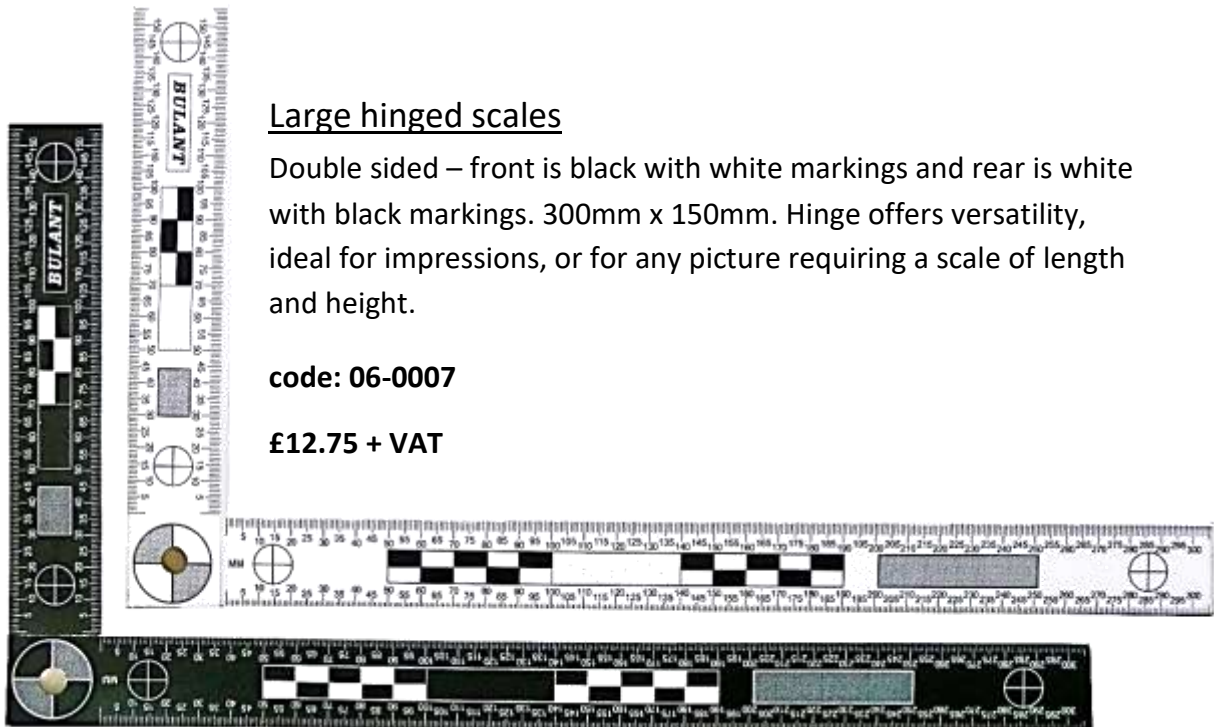


Large hinged scales

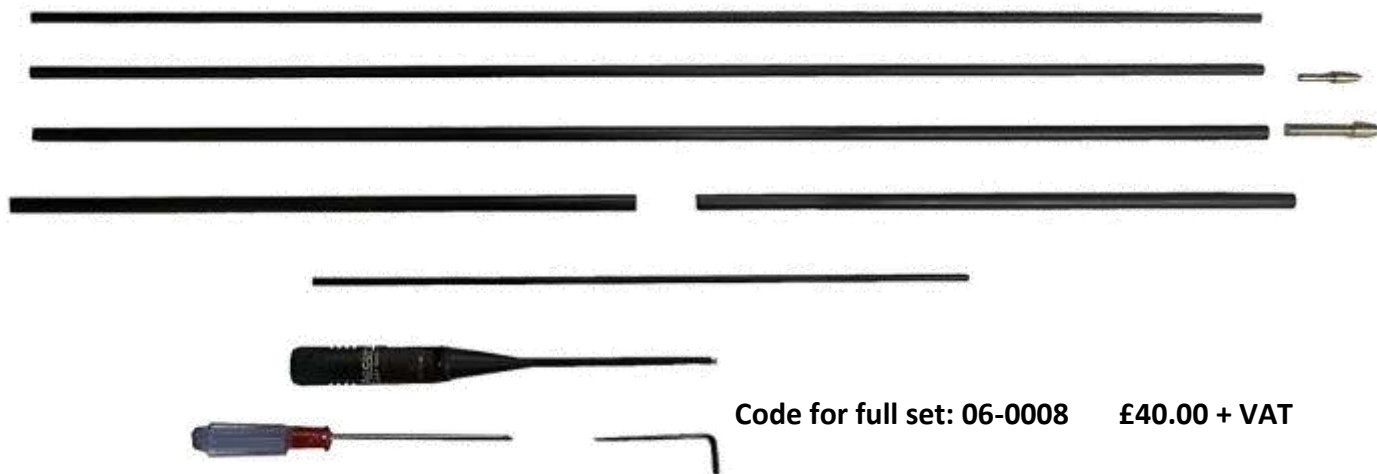
Double sided – front is black with white markings and rear is white with black markings. 300mm x 150mm. Hinge offers versatility, ideal for impressions, or for any picture requiring a scale of length and height.

code: 06-0007

£12.75 + VAT



Bullet hole alignment rods (set)



Code for full set: 06-0008 £40.00 + VAT

<u>Comprising of:</u>	<u>Codes for spare:</u>	<u>Price (+ VAT)</u>
2 x 5mm diameter rods	06-0009	£4.50 (each)
1 x 7mm diameter rod	06-0010	£5.00
2 x 7mm diameter joiners	06-0011	£2.50 (each)
1 x 3mm diameter joiner	06-0012	£3.00
1 x Laser	06-0013	£15.50
1 x Allen key	06-0014	£0.25
1 x Screwdriver	06-0015	£4.00
2 x "Bullets" - .22/9mm	06-0016	£2.00 (each)

Notes:

- 1] Used to determine the direction and entry angle of a bullet.
- 2] To aid rod entry into the bullet hole, the bullet can be fitted into the end of the rod. Two different calibre sizes come as part of the set.
- 3] The rod can be extended to give extra length by using combinations of the rods and joiners supplied.
- 4] Extra rods can be purchased for marking multiple entry hole trajectories.